



Spring 2026 Spain Program in Barcelona

Learn more about the program at
<https://ripon.edu/spain/>

Applications: May 9
Deposit: September 2

Contact: forbesr@ripon.edu
for more information

2026 Faculty Director

Dr. Robin Forbes-Lorman

Agenda

- Program Overview
- Details about
 - Academics
 - Living in Barcelona
 - Financials
- Q&A
 - Follow up questions
 - Email: forbesr@ripon.edu
 - Send your parent's questions too!



PROGRAM AT A GLANCE

- **Dates:** ~January 11th to April 24th, 2026 (Spring 2026 semester)
- **Study abroad** in Barcelona at the School for International Studies (SIS) with both Ripon College faculty and local professors
- **Live with a local host family** for an authentic Barcelona experience
- Take part in a variety of **cultural activities and excursions** (day trips and weekend trips)
- **Support** from a local team of onsite staff in Barcelona



A little background on the program providers



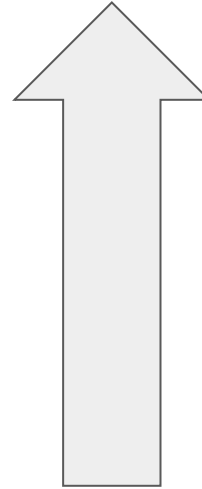
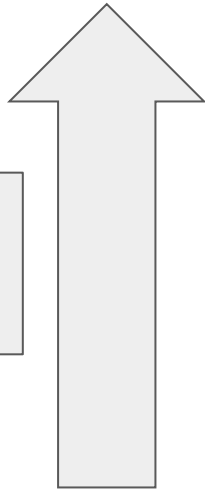
Ripon College Spain Program in Barcelona

**Infrastructure
Logistics**

Academics

**Barcelona Study
Abroad Experience
BSAE**

**School for
International Studies
SIS**



ACADEMICS

- **One class with Ripon faculty,** Robin Forbes-Lorman (Professor of Biology)
- **Choose 3 elective courses** at the School for International Studies (SIS).
- **Experience counts as CTL 210**
- **Final grades sent directly to Ripon College** to add to transcript



Students Beyond Borders: A Study of Medicine, Health, and Science in Barcelona

- All students enroll
- Medicine, health, and science in Barcelona
 - History of science and medicine
 - Modern initiatives and practices in health, research, and medicine
 - Field trips

Additional 2 credits (IDS 260) in the fall and 1 credit in the spring



[Royal Academy of Medicine](#)



Biomedical research park

THE SCHOOL FOR INTERNATIONAL STUDIES (SIS)

- **Small class sizes** (8-25 students)
- **Immersive field studies and engaging guest speakers** use the city of Barcelona as your classroom
- Both **local and international** faculty
- Variety of elective courses in both **English and Spanish**



Example SIS courses: Choose 3 Elective Courses

- [Great 20th Century Artists: Picasso, Dalí, Miró](#)
- [Architecture and Urban Design: The Barcelona Example](#)
- [Spanish Society Through Film and Television](#)
- [Creative Writing: Storytelling Through an Intercultural Lens](#)
- [Cross-Cultural Approach to Psychology](#)
- [Infectious Barcelona: Diseases, Pandemics & Urban Planning through History](#)
- [Understanding Public Health and Healthcare Inequities: Spain and USA](#)
- [Food and Culture in the Mediterranean Basin](#)
- [Spanish Civilization and Culture](#)
- [Savoring Spain: Advertising & PR of Spanish Food Products](#)

- [Sports and Society in Spain and Catalonia](#)
- [European Sports: Business and Management](#)

- [Management and Ethics](#)
- [International Marketing](#)
- [Creativity and Innovation](#)
- [Start-Ups and the Emerging Economy: Creating Your Own Business](#)
- [Sustainable Development in Spain: Environmental Challenges and Pathways](#)

- [Leadership in a Diverse World \(TODOS\)](#)
- [Social Movements - Creating Social and Political Alternatives \(TODOS\)](#)
- [Black Barcelona: The Experience of Race & Ethnicity in Spain \(TODOS\)](#)



- [A1 Elementary Spanish Language and Culture](#)
- [A2 Upper Elementary Spanish Language and Culture](#)
- [B1 Intermediate Spanish Language and Culture](#)
- [B2 Upper Intermediate Spanish Language and Culture](#)
- [C1 Advanced Spanish Language and Culture](#)
- [Introducción a la Literatura Española e Hispanoamericana](#) (in Spanish)
- [Civilización y Cultura Española](#) (in Spanish)
- [Cultura & Comida en el Mediterraneo](#) (in Spanish)

INTERNSHIPS

- An option for one of the 3 elective courses is the **Global Internship Seminar**, which includes coursework and **150+ hours of an internship at a local company** in Barcelona
- BSAE will work to provide you with an internship placement **within your field of interest**.
 - e.g., Business, Marketing, Political Science, Sports, Fine Arts, Psychology, Environmental Science, IT, Health
- Internships usually require **about 15 hours per week**
- Spanish language skills **are often not required** but are helpful in the placement process



ACADEMIC TIMELINE

Spring 2025- Talk with Ripon College advisor

Mid-September - October.

Choose SIS elective courses

Work with Ripon College advisor to plan determine how courses may count toward graduation and/or major/minor requirements.

~12 Jan: Arrival, orientation and integration

~16 Jan: classes start

Classes meet from Monday-Thursday

29 March - April 5: Spring break (**Semana Santa**)

24 Apr: Program ends

- Final grades sent directly to Ripon College





LIVING IN BARCELONA

ORIENTATION WEEK AND SIS INTEGRATION WEEK

- Upon your arrival in Barcelona, there will be an **airport pick-up** for the group flight to provide transportation to your homestay
- **Orientations:** Welcome, Cultural, Academic, and Internship (if applicable)
- **Welcome Lunch** with your program mentor and other students
- **Tour of the city center**
- **SIS Integration Week:** to feel comfortable in your new home before classes start. Learning Spanish language, history, culture, etc.



HOUSING

- While in Barcelona, you'll **stay with a host family** for an authentic local experience.
- Will **most likely share a room** with another Barcelona SAE student, but you may have your own
- **Internet access**
- **Breakfast and dinner** is included
- Students are responsible for **purchasing their own lunch**
 - Ripon students will be provided a weekly stipend to cover the cost of lunch.
- Being in a home stay means trying **lots of local food, a built-in support system, and a chance to practice your Spanish!**



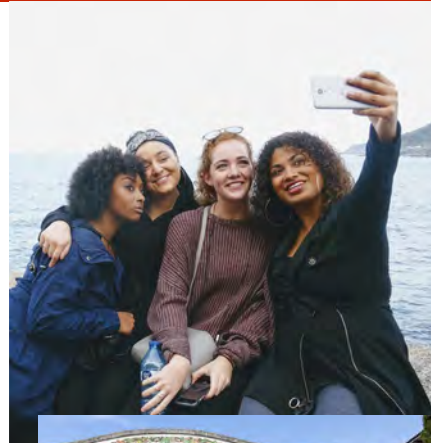
CULTURAL ACTIVITIES

- Spanish cooking class, flamenco dance class, barrio (neighborhood) tours, fútbol (soccer) games, hikes, volunteer opportunities, etc.
- Local college students attend most of the cultural activities so that you have the **chance to meet locals, practice your Spanish, and get tips from locals.**



EXCURSIONS: DAY TRIPS

- **Seven single day trips** included to other parts of Catalonia.
 - Examples of Day Trips: Cavas & Sitges, Montserrat, Girona, Tarragona, and Dalí Museum
 - Transportation, museum entrance fees, and tour guides are all included.



HEALTH & SAFETY

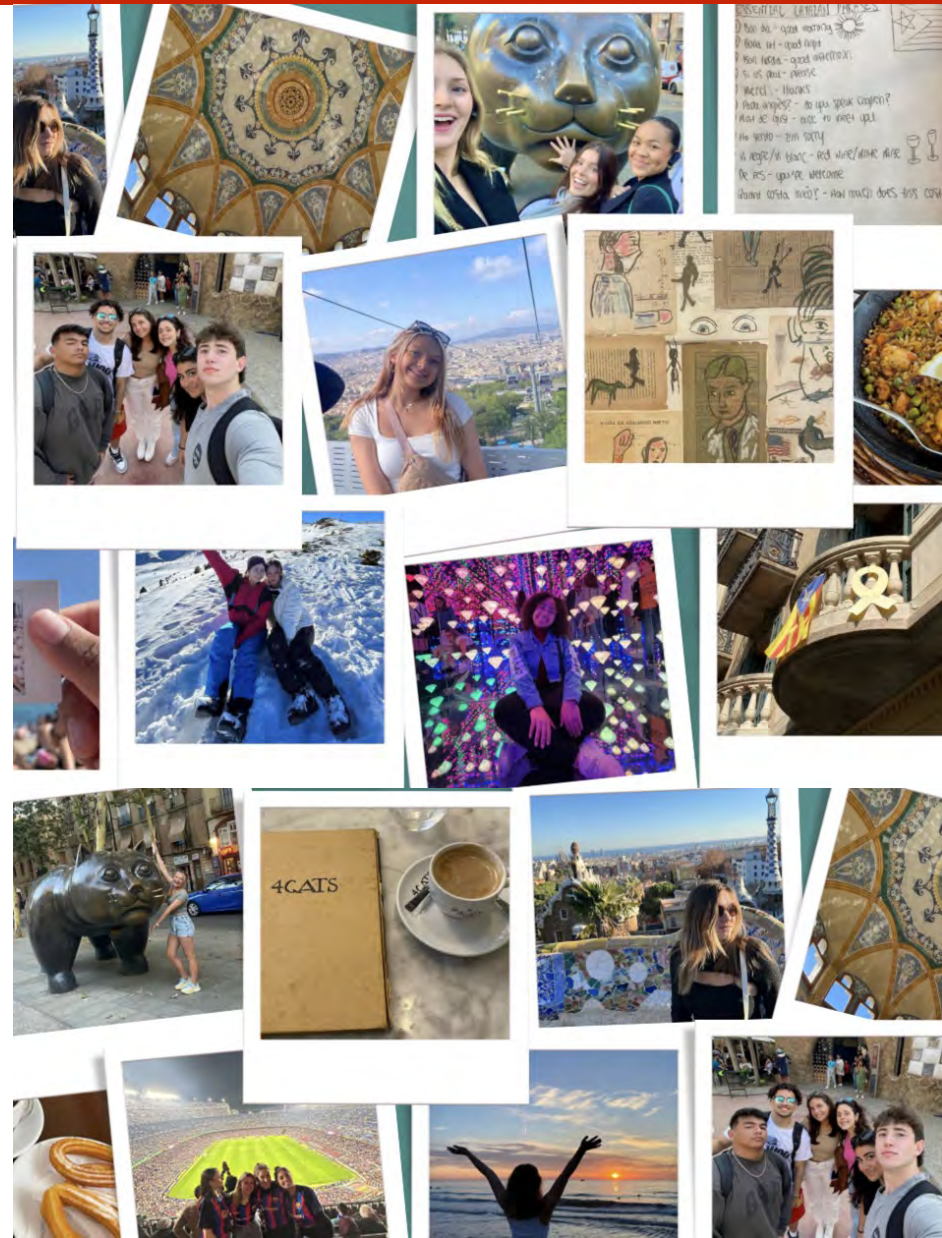
- You'll have **comprehensive overseas health insurance**
- BSAE staff have a **24 hour emergency phone**
- **Onsite staff is trained** in health & safety and emergency situations
- **Partner doctor's office & hospital with 24/7 English translators** and lots of experience working with U.S. students
- **Onsite Health & Safety team and BSAE staff Cultural Mentor** to support you
- **Mental Health Services:** English-speaking therapist available



YOUR BARCELONA EXPERIENCE

Resources to make your own unique Barcelona experience:

- A **weekly Cultural Agenda** full of all the free/low-cost events taking place around the city each week
- The **Barcelona Student Guide** is a comprehensive resource:
<https://sites.google.com/barcelonasae.com/onlinestudentguide/home?authuser=0>
- Use the **Barcelona Bucket List** (a list of 100 things to do in and around Barcelona) and participate in the monthly contest to win a prize!





FINANCIAL INFORMATION

HOW MUCH WILL IT COST?

Ripon College Tuition, Room & Board (academics and homestay)

\$6000 Program Fee

Includes Visa fee, round trip airline ticket, unlimited metro pass, cultural orientation, program sponsored day trips and weekend excursions

Personal items and expenses for additional travel outside of sanctioned trips are not included.

If you have a financial barrier....talk to us!

Apply for [scholarships](#)

Raise funds by using

<https://www.fundmytravel.com/partner/Barcelona-SAE>

Overwhelmed by scholarship applications?

Dr. Robin can help



TIMELINE

THIS SPRING/SUMMER

- Apply for a passport or find your passport and check the expiration date
- Schedule meeting with your academic advisor to talk about study abroad
- Consider registering for a Spanish class or trying DuoLingo

9 May → [Application](#)

2 Sept → \$1000 deposit due President's office

4 Oct → Group Visa Consulate Appointment

1 Dec → \$5000 remainder or evidence of scholarship



Please contact the President's office for individualized payment plans for the program fee (studyabroad@ripon.edu)

Please contact Alycia Harbin (harbina@ripon.edu) for individualized payment plans for tuition.



Ripon College Spring 2026 Spain Program in Barcelona

Preguntas?



El antiguo Hospital
de la Santa Creu

Dispensari Antituberculós

